



The Most Reliable Portable Printers®

# MICROFLASH 8I

## User's Guide





<b>microFlash 8i Printer</b>	4
Open View	4
Closed View	4
<b>Installing a Radio Card</b>	5
<b>Using the Ribbon</b>	6
Installing the Ribbon	6
Removing the Ribbon	7
<b>Installing and/or Replacing Batteries</b>	8
Charging the Battery	9
<b>Loading Paper</b>	10
Paper Quantity Guidelines	12
Tearing the Paper	12
<b>Printing a Self-Test</b>	12
<b>Setting Top of Form (TOF)</b>	13
<b>Using Buttons and Indicators</b>	14
Control Panel	14
LED Indicators	14
Button Functions	15
Audio Indicators	16
<b>Using Power Options</b>	17
Attaching Cables	18
<b>Configuring the Printer</b>	18
<b>Supplies</b>	20

# microFlash 8i Printer

## Open View



Figure 1

## Closed View



Figure 2

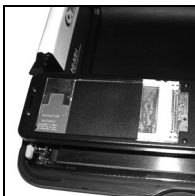
## Installing a Radio Card

**Note:** The following information applies to printers with radio card capabilities.

1. Open the printer's cover.
2. Push in the locking tab and lift the access cover (Figures 3 and 4).



**Figure 3**



**Figure 4**

3. Insert the radio card face up into the PCMCIA slot (Figure 5).



**Figure 5**

4. Close the access cover and press down until the locking tab clicks into place.

## Using the Ribbon

### Installing the Ribbon

The mobile label printer ships without a ribbon installed. To install a ribbon, perform the following:

1. Remove the ribbon from its packaging.
2. Open the printer's cover.
3. Remove the orange "Open Printer" label from the locking lever (green knob).
4. Depress the locking lever to open the print mechanism.
5. Slide the printhead away from the edge of the printer (Figure 6).
6. Hold the ribbon by the flat handle.
7. Install the ribbon on the printhead (Figure 7).

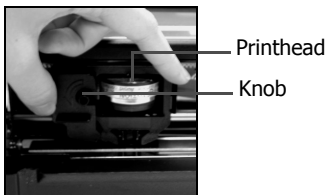


**Figure 6**



**Figure 7**

8. On the ribbon, turn the knob counter-clockwise several times to fully seat the ribbon to the printhead (Figure 8).



**Figure 8**

## Removing the Ribbon

1. Slide the printhead away from the edge of the printer (Figure 9).



**Figure 9**

2. Pull the ribbon away from the printer (Figure 10).



**Figure 10**

## Installing and/or Replacing Batteries

1. Open the printer's cover. Verify the control panel is facing toward you.
2. Place the battery in the battery cavity (Figure 11).



**Figure 11**

3. Connect the printer's cable connector to the battery (Figures 12a and 12b). Verify the printer's battery connector is aligned properly. The rubber key (on the printer's battery connector) should be aligned with the bottom notch (on the battery).



**Figure 12a**



**Figure 12b**

Rubber  
key

4. Install the battery strap over the printer's cable connector and the battery so that they are both held in place (Figure 13).



**Figure 13**

5. Close the printer's cover.
6. Charge the battery. For more information, see *Charging the Battery on page 9*.

## Charging the Battery

You can charge the battery either by connecting power supplied from the AC power adapter, or by connecting power supplied from the cigarette lighter adapter as follows:

- **AC Power Adapter:** Plug the AC power cord into a wall outlet. For information on using AC power, see *Using Power Options on page 17*.
- **Cigarette Lighter Adapter:** Connect the printer's cigarette lighter adapter connector into your vehicle's cigarette outlet. For more information, see *Using Power Options on page 17*.

The battery charges in approximately 4 to 5 hours.

## Loading Paper

**Note 1:** Do not use paper that has glued edges or paper with carbon between the sheets; only use paper with clawed crimps.

**Note 2:** For information on the printer's paper capacity, see *Paper Quantity Guidelines* on page 12.

1. Open the two latches on the side of the printer's cover and lift the printer's cover to the fully open position.

**Note:** Remove the orange label from the locking lever (green knob).

2. Depress the locking lever (green knob) to open the print mechanism (Figure 14).



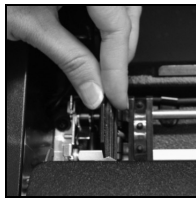
**Figure 14**

3. Verify the center guide is centered (Figure 15)
4. Lift the two tractor feed clips (Figure 16)



**Figure 15**

Center  
guide



**Figure 16**

5. Fold the stack of paper in half with the short sides together and with the top of the form coming out from the inside fold (Figure 17).
6. Place the paper into the paper cavity with the bottom edges under the paper lip in the bottom of the cavity (Figure 18).

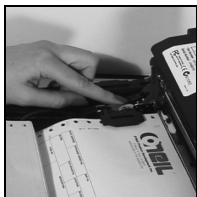


**Figure 17**



**Figure 18**

7. Feed the top of the form from the inside of the fold through the tractor feed pins and to the outside edge of the printer.
8. Align the holes in the paper with the studs in the tractor feed wheel (Figure 19).
9. The left tractor feed is adjustable. Lift the locking lever to release the tractor feed.
10. Verify that the paper is taut and the paper feeds correctly.
11. Close the tractor feed clips, the print mechanism, and the printer's cover (Figure 20).



**Figure 19**



**Figure 20**

12. Set top of form. For more information, see *Setting Top of Form (TOF) on page 13.*

## Paper Quantity Guidelines

Form Parts	Maximum Number of Sheets
1	200
2	90
3	60
4	50

## Tearing the Paper

1. Set the paper to top of form. For more information, see *Setting Top of Form (TOF) on page 13*.
2. Grab one side of the paper at a leading edge and pull up. Once the paper has started tearing at the perforation, finish with a swift pull upward and away (Figure 21)



Figure 21

## Printing a Self-Test

1. Turn the printer off by pressing buttons 1 and 2 simultaneously.
2. Press and hold button 1. After printing begins, release button 1.

## Setting Top of Form (TOF)

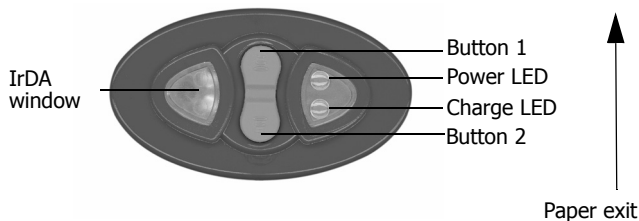
1. Press button 1 to turn on the printer.
2. Position the paper by pressing button 1 until the end of the paper is at the edge of the case. If necessary, press button 2 to back feed the paper.
3. Turn the printer off by pressing buttons 1 and 2 simultaneously (Figure 22).
4. Press button 1 to turn on the printer. The top of form is automatically set.



**Figure 22**

## Using Buttons and Indicators

### Control Panel



### LED Indicators

#### *Charge LED*

LED	Description	Action
Solid red	Charging in progress.	None.
Red flash - slow	Battery disconnected. Low temperature.	Connect battery. Change environment.
Red flash - fast	High temperature.	Change environment.
Red to orange - slow	Low voltage.	Restart charge.
Red to orange - fast	High voltage.	Replace battery.
Orange flash - slow	Charge timeout.	Restart battery charge.
Orange flash - fast	Internal error.	Reset printer
Green	Charge completed.	None.

*Power LED*

<b>LED</b>	<b>Description</b>	<b>Action</b>
Green	Power on.	None.
Green flash - fast	Paper out, head jam.	Install paper, check for paper jam.
Green to orange alternating flash - fast	If a radio card is installed, indicates radio and printer are on.	None.
Orange flash - fast	If a radio card is installed, indicates radio is on and printer is off.	None.

**Button Functions***Charge LED*

<b>Function</b>	<b>Description</b>
1 line feed	Press Button 1 once.
5 line feeds	Press and hold Button 1.
Form feed	Press and hold Button 1, then release.
Self-test	Press and hold Button 1 until printing starts.
Clear out of paper or head up	Press Button 1.
Back feed	Press Button 2.
Power on/off/TOF	Press Button 1 and 2 simultaneously.

## Audio Indicators

LED	Description	Action
Long series of short beeps	Head jam.	Check for paper jam.
1 short	RF power is on (when RF power button is pressed and RF power was off).	None.
1 long	Boot code is starting or restarting (occurs more than once when downloading new firmware).	None.
2 short	RF power is off (when RF power button is pressed and was on).	None.
3 mid-length	Low battery voltage.	Charge battery.
4 short	Charge is starting when external power is applied to printer.	None.
5 double	Out of paper.	Install paper.
8	CRC firmware error.	Redownload firmware.
10	Error writing to communication controller firmware.	Redownload firmware.
Infinite beeps/ toggle LEDs	Comm controller failure.	Redownload firmware.

**Note:** Pressing Button 1 during a form feed or during printing cancels the action.

## Using Power Options



**Figure 23**

Use the following options to power the printer:

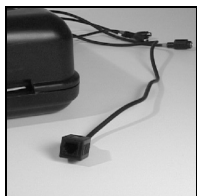
- AC                    AC/DC Power Supply
- DC                    Cigarette Adapter
- Batteries            NiMH

The red-tagged cable attached to the printer connects to the AC adapter cable. The white-tagged cable connects to the cigarette lighter adapter for use in vehicles. If neither the red nor the white cable is in use, the printer is running off the battery.

The third cable (RJ11 telephone style) is the data cable (see *Attaching Cables on page 18*). The fourth cable, blue-tagged, is a third cradle connection used to connect to external cradle, either in a truck or a bag solution.

## Attaching Cables

The RJ11 (telephone style) connector attached to the printer connects to your notebook and/or computer or handheld (HHC) using an optional data cable or handheld cradle.



**Figure 24**

## Configuring the Printer

The printer has many configurable settings. To configure or upgrade firmware, download the Windows configuration programs at [www.oneilprinters.com](http://www.oneilprinters.com).

For information on MF8i printer commands, refer to the *MF8i Printer Commands* document on the O'Neil Product Development web site at: <http://www.oneilprinters.com/support/documents>.

## Agency Approvals

### FCC Notice

This equipment has been tested and found to comply with the limits for a Class B digital device, pursuant to Part 15 of the FCC Rules. These limits are designed to provide reasonable protection against harmful interference in a residential installation.

This equipment generates, uses and can radiate radio frequency energy and, if not installed and used in accordance with the instructions, it may cause harmful interference to radio communications. However there is no guarantee that interference will not occur in a particular installation. If this equipment does cause harmful interference to radio or television reception, which can be determined by turning the equipment off and on, the user is encouraged to try to correct the interference by one or more of the following measures:

- Reorient or relocate the receiving antenna.
- Increase the separation between the equipment and receiver.
- Connect the equipment to an outlet on a circuit different from that to which the receiver is connected.
- Consult the dealer or an experienced radio/TV technician for help.



Applicable Directive

- 89/336/EEC, 73/23/EEC

Applicable Standards

- EN55022 (1998)
- EN55024 (1998)
- EN60950 (1992)



Applicable Standards

- TS001
- AN/NZS3260

## Warranty

The Company warrants that O'Neil Product Development, Inc.'s products are free from defects in manufacturing materials and workmanship for one (1) year from date of original purchase to Buyer/Distributor (OEMs 90 days from the date of purchase). Batteries, cables, power supplies, and other accessories will be warranted for ninety (90) days. O'Neil Product Development, Inc. makes no other warranties, expressed or implied, including implied warranties of merchantability and fitness of purpose. If you try to repair, disassemble, or change the product in any way, or use parts not provided by O'Neil without prior, written authorization, all warranties are void. For complete warranty and repair information, see the Warranty Card included in your original packaging.

## Copyright

This manual and any examples contained herein are provided "as is" and are subject to change without notice. O'Neil Product Development, Inc. makes no warranty of any kind with regard to this manual, including, but not limited to, the implied warranties of merchantability and fitness for a particular purpose. O'Neil Product Development, Inc. shall not be liable for any errors or for incidental or consequential damages in connection with the furnishing, performance, or use of this manual or the examples herein. This guide is copyrighted. All rights are reserved. This guide may not, in whole or in part, be reproduced, translated, stored in a retrieval system or transmitted in any form or by any means, electronic, mechanical, photographic, or otherwise, without the prior written consent of O'Neil Product Development, Inc.

## Supplies

Use only supplies certified by the Original Equipment Manufacturer (OEM). For OEM supplies, please contact O'Neil at (949) 458-0500.

## For more information

For more information about using the printer, contact O'Neil at (949) 458-0500, or visit [www.oneilprinters.com](http://www.oneilprinters.com).









**The Most Reliable Portable Printers.**

## **World Headquarters**

O'Neil Product Development  
8 Mason  
Irvine, CA 92618-2705  
Ph: 949.458.0500  
Fx: 949.458.0708

## **Europe**

6 Joplin Court, Crownhill  
Milton Keynes MK8 0JP  
United Kingdom  
Ph: +44 (0) 1908 635360  
Fx: +44 (0) 1908 635361

## **AustralAsia**

1/8 Railway Terrace  
Dutton Park  
QLD 4102  
Australia  
Ph: +61 (7) 3255 3360  
Fx: +61 (7) 3255 3365

**[WWW.ONEILPRINTERS.COM](http://WWW.ONEILPRINTERS.COM)**